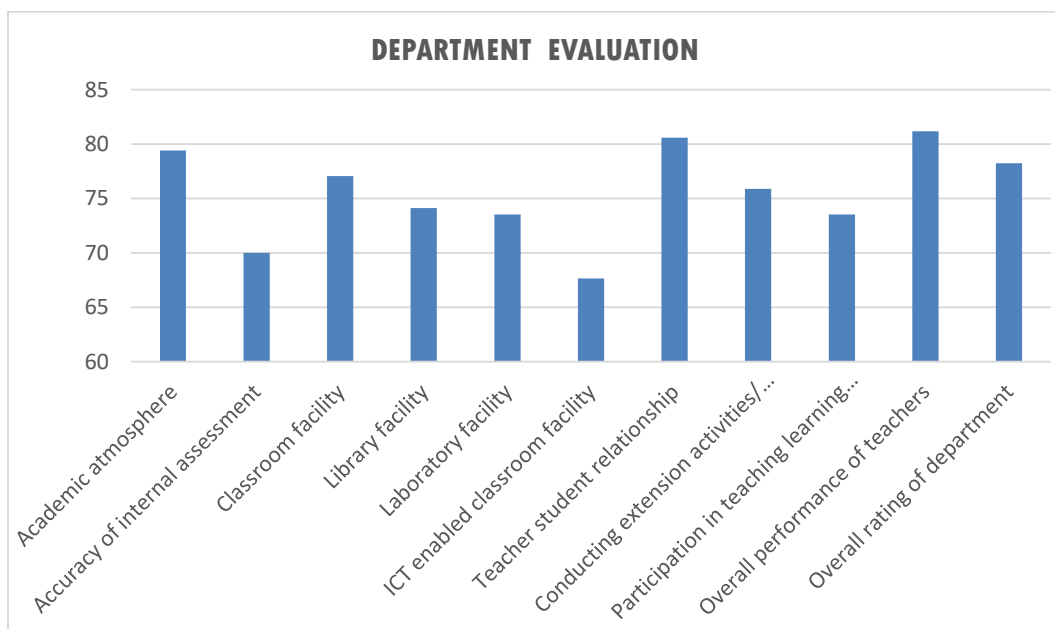


FEEDBACK ANALYSIS – DEPARTMENT OF BOTANY (2019-2022 Batch)
Department Evaluation : Botany II semester (2019-2020)

Sl.No	Criteria	Percentage
1	Academic atmosphere	79
2	Accuracy of internal assessment	70
3	Classroom facility	77
4	Library facility	74
5	Laboratory facility	74
6	ICT enabled classroom facility	68
7	Teacher student relationship	81
8	Conducting extension activities/ workshops/seminars	76
9	Participation in teaching learning process	74
10	Overall performance of teachers	81
11	Overall rating of department	78

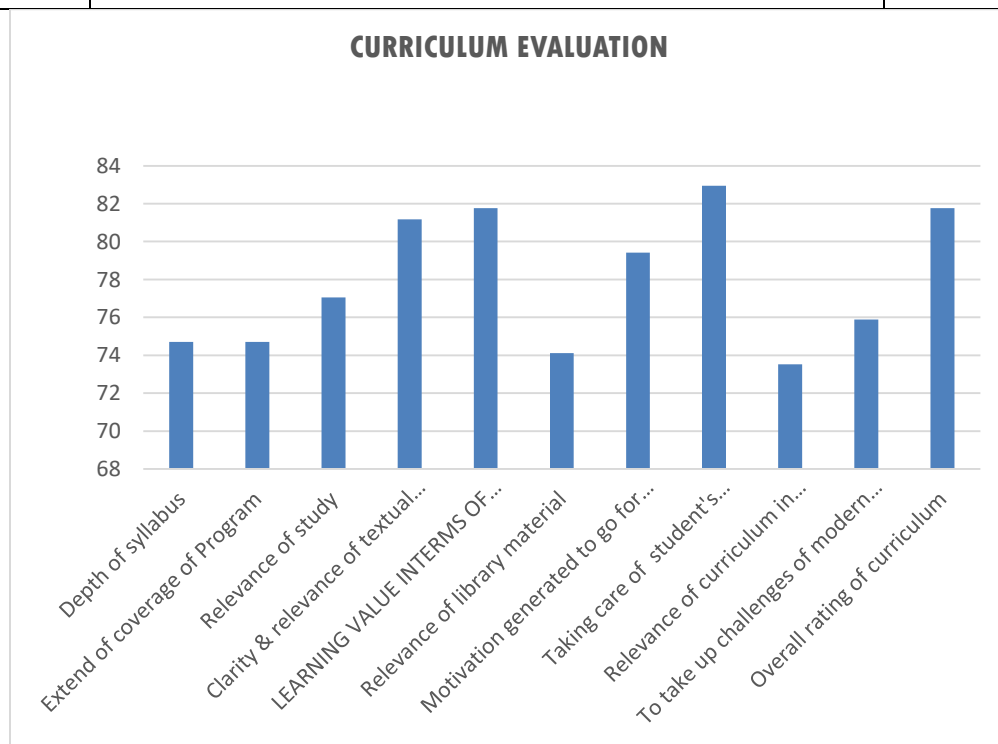


Department evaluation and action plan taken report of II semester students of 2019-2020 :

Feedback for Department evaluation was collected from II semester Botany students. Areas need special attention included ICT enabled classroom facility and accuracy of internal assessment followed by library and laboratory facility. The above results obtained were thoroughly discussed in the Department level meeting and proper measures were taken to improve the conditions.

Curriculum Evaluation : Botany II semester (2019-2020)

Sl.No	Criteria	Percentage
1	Depth of syllabus	75
2	Extend of coverage of Program	75
3	Relevance of study	77
4	Learning values in terms of knowledge , skills and abilities	81
5	Clarity & relevance of textual reading material	82
6	Relevance of library material	74
7	Motivation generated to go for higher studies	79
8	Taking care of student's requirements	83
9	Relevance of curriculum in empowering students	74
10	To take up challenges of modern life	76
11	Overall rating of curriculum	82

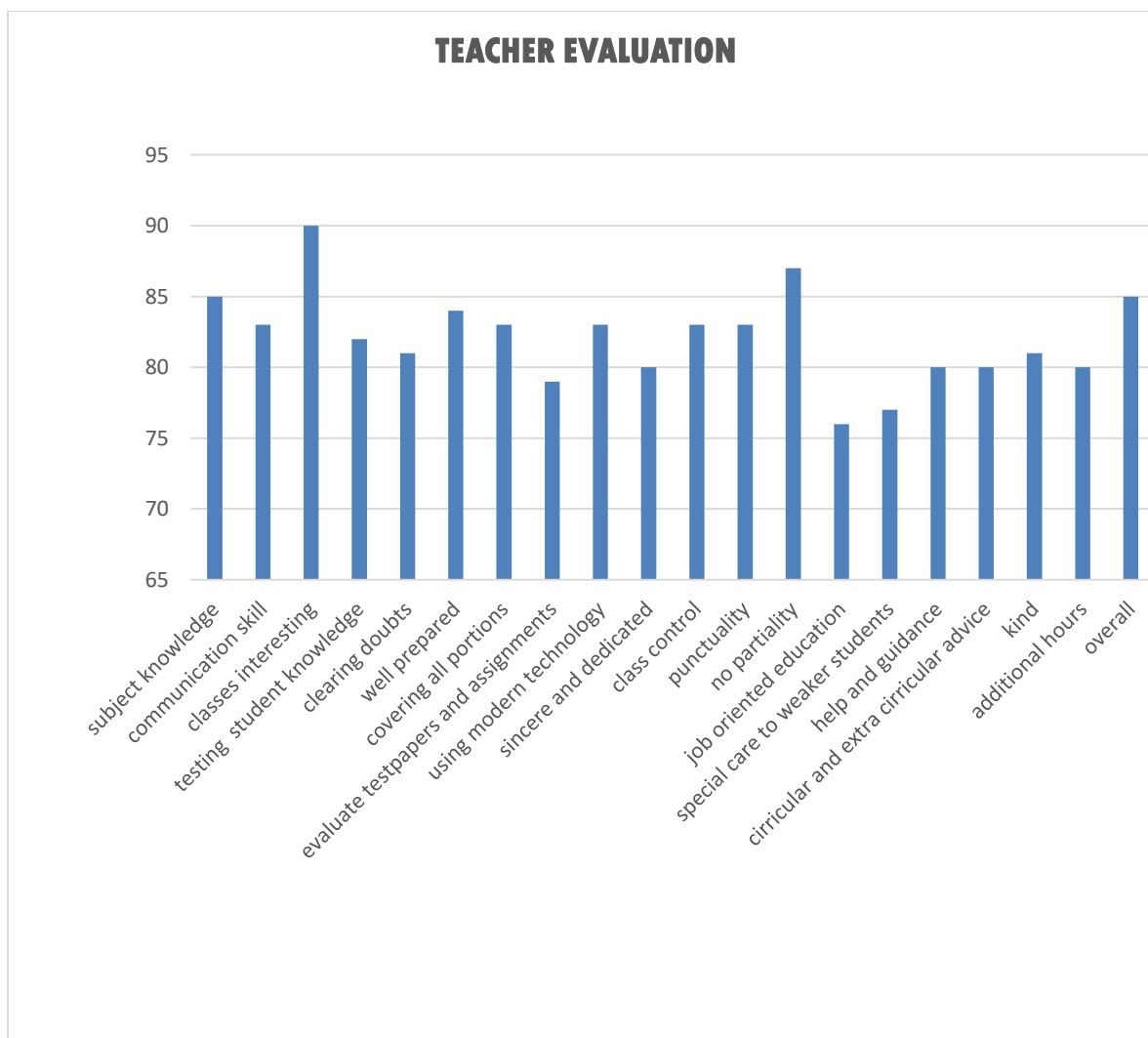


Curriculum evaluation and action plan taken report of II semester BSc Botany students of 2019-2020 :

Analysis of the above results high lightened the areas viz., empowerment of students, relevance of library material and depth of syllabus. The matter was discussed in the Department level meeting and measures were taken to bring the attention of the Board of studies in the above matters.

Feedback Analysis of Faculty : Botany II semester (2019-2020)

criteria	Average
Subject knowledge	85
Communication skill	83
Classes interesting	90
Testing student knowledge	82
Clearing doubts	81
Well prepared	84
Covering all portions	83
Evaluate test papers and assignments	79
Using modern technology	83
Sincere and dedicated	79
Class control	83
Punctuality	83
No partiality	87
Job oriented education	76
Special care to weaker students	77
Help and guidance	80
Curricular and extra curricular advice	80
Kind	81
Additional hours	80
Overall	85



Teacher evaluation and action taken report of II semester BSc Botany students 2019-2020

Teacher evaluation was collected from the second semester Botany students of 2019-2020. Analysis of the data revealed that certain areas like job oriented education, giving special care to weaker students, giving help and guidance need special attention. The matter was discussed in detail in the department level meeting and also with Principal and appropriate measures were taken.